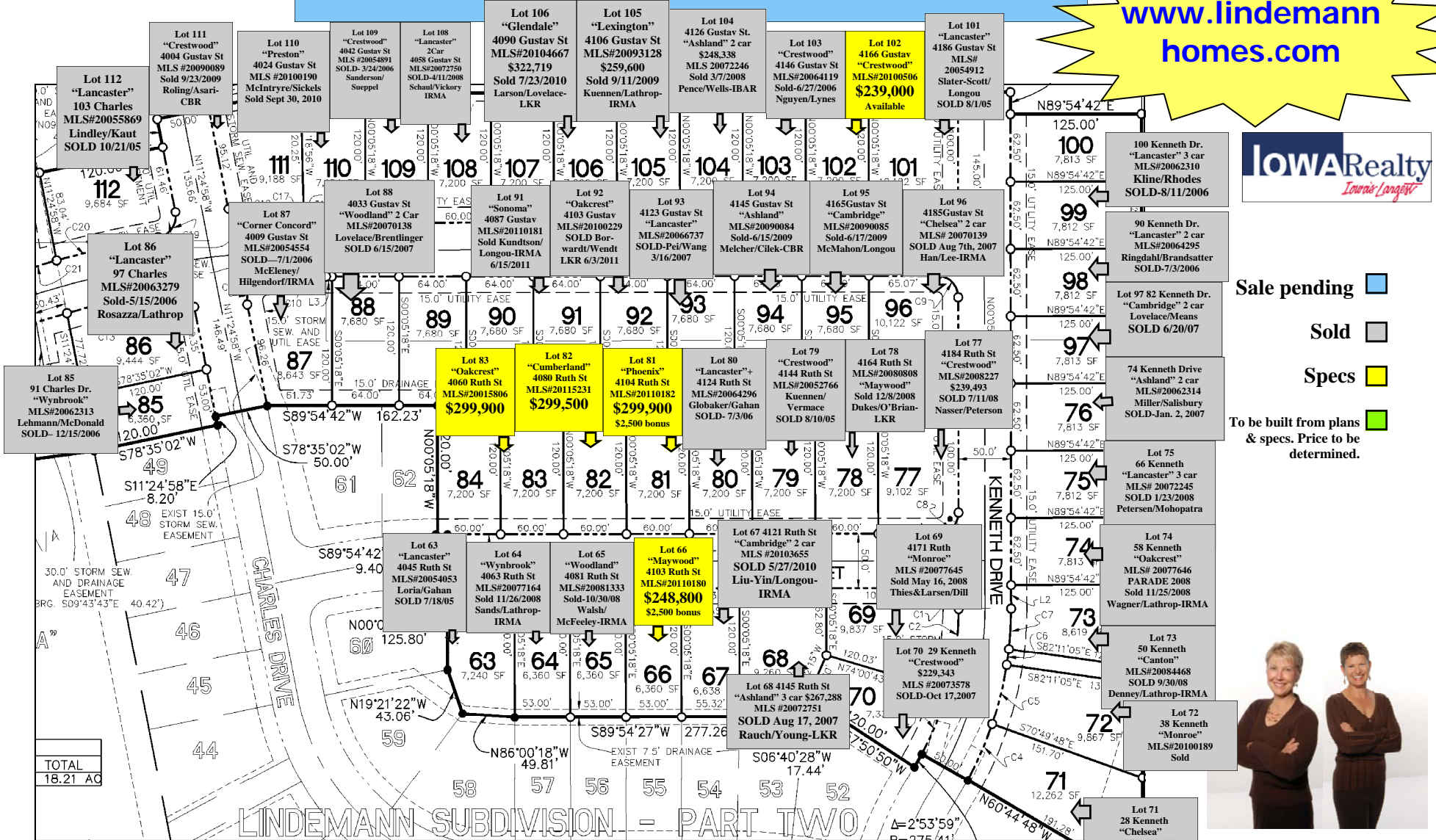


Lindemann Subdivision Part III East



www.lindemannhomes.com



- Sale pending
- Sold
- Specs
- To be built from plans & specs. Price to be determined.



Call Angie Longou
631-2385
or Lou Ann Lathrop
331-2781

- LOT #82-\$55,000 Walk-out
- LOT #83-\$55,000 Walk-out
- LOT #84-\$55,000 Walk-out
- LOT #89-\$53,500 non Walk-out
- LOT #90-\$53,500 non Walk-out
- LOT #100-\$57,000 Walk-out
- LOT #107-\$55,000 Walk-out

www.lindemannhomes.com

10/25/2011 12:04 PM

LINDEMANN SUBDIVISION - PART TWO

TOTAL
18.21 AC